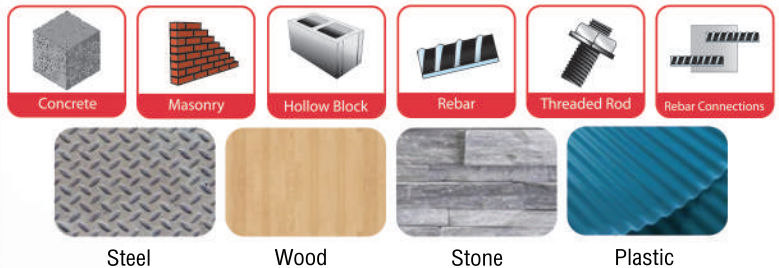




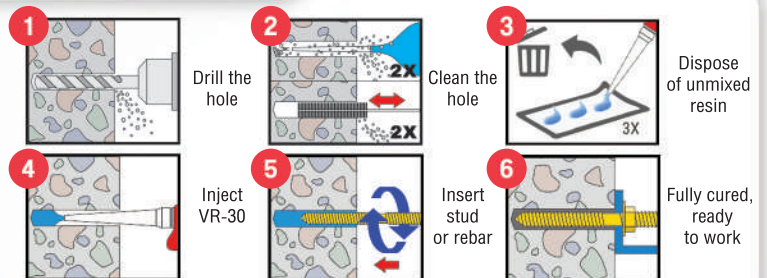
Any general gun can be used

VR-30 CHEMICAL ANCHOR

APPLICATION



INSTRUCTION



WORKABLE UNDERWATER



ETA CE

European Technical Assessment
SANKO FASTEM
No. 1020-CPR-090-047251

ETA 20/0334
EAD 330499-01-0601
M8 - M24

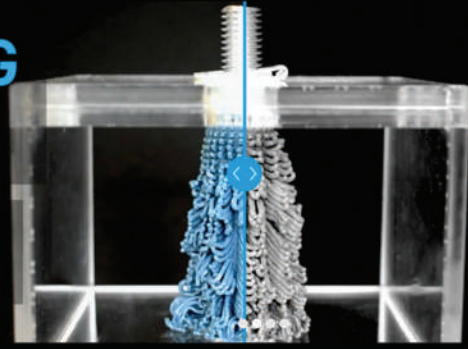
For fixing and/or supporting to concrete, structural elements (which contributes to the stability of the works) or heavy units.



GEL/CURE TIME

	Gel Time	Cure Time
+20 °C	15 minutes	5 hours
+25 °C	10 minutes	145 minutes
+30 °C	7.5 minutes	85 minutes
+35 °C	5 minutes	50 minutes
+40 °C	3.5 minutes	40 minutes
+45 °C	2.5 minutes	12 minutes

NEW FADING BLUE RESIN



STUD BOLTS OR THREADED ROD

TENSION LOAD CALCULATIONS FOR COMBINED PULLOUT AND CONCRETE CONE FAILURE

	STUD BOLTS OR THREADED ROD : mm						[kgf.]
	M8	M10	M12	M16	M20	M24	
Concrete strength C20/25							
Drill bit diameter : mm	10	12	14	18	22	26	
Standard embedment depth : mm	80	100	120	160	200	240	
Minimum edge distancing : mm	35	40	50	65	80	96	
Minimum spacing : mm	35	40	50	65	80	96	
Filling volume : ml	9	9	18	27	36	60	
Characteristic Load : kgf	2,000	2,500	4,000	7,600	10,600	15,300	

REBAR

TENSION LOAD CALCULATIONS FOR COMBINED PULLOUT AND CONCRETE CONE FAILURE

	REBAR : mm						[kgf.]
	D8	D10	D12	D14	D16	D20	
Concrete strength C20/25							
Drill bit diameter : mm	12	14	16	18	20	25	
Standard embedment depth : mm	80	100	120	140	160	200	
Characteristic Load : kgf	900	1,400	2,000	2,700	8,100	5,700	

STUD BOLTS OR THREADED ROD / SHEAR LOAD

CHARACTERISTIC VALUE OR RESISTANCE TO SHEAR LOAD STEEL FAILURE WITHOUT LEVER AEM

	STUD BOLTS OR THREADED ROD : mm						[kgf.]
	M8	M10	M12	M16	M20	M24	
Steel grade 5.8	917	1,529	2,141	3,976	6,220	8,973	
Steel grade 8.8	1,529	2,345	3,467	6,424	9,993	14,378	
Steel grade 10.9	1,835	2,957	4,282	8,055	12,542	18,048	
Stainless steel grade A2-70, A4-70	1,325	2,039	3,059	5,608	8,769	12,644	
Stainless steel grade A4-80	1,529	2,345	3,467	6,424	9,993	14,378	

